



Elm Avenue, W5

OIE £500,000. At almost 900sq ft this three double bedroom purpose built apartment with garage is situated at the southern tip of Ealing Common, in a central part of Ealing convenient for plentiful green spaces but in close proximity to the major tube stations.

The recently refurbished apartment provides an enormous amount of space in a central location for entertaining and relaxation. There are three good sized double bedrooms and the reception measures an impressive 23 x by 12'10 leading out directly onto a balcony with amazing views. The stylish, fitted kitchen is separate from the reception ensuring no compromise on space. The apartment represents a great buying opportunity for professionals or families looking to buy into central Ealing and further benefits from incredible natural light, long lease, no chain and stunning communal grounds all within a stone's throw from Ealing Common.

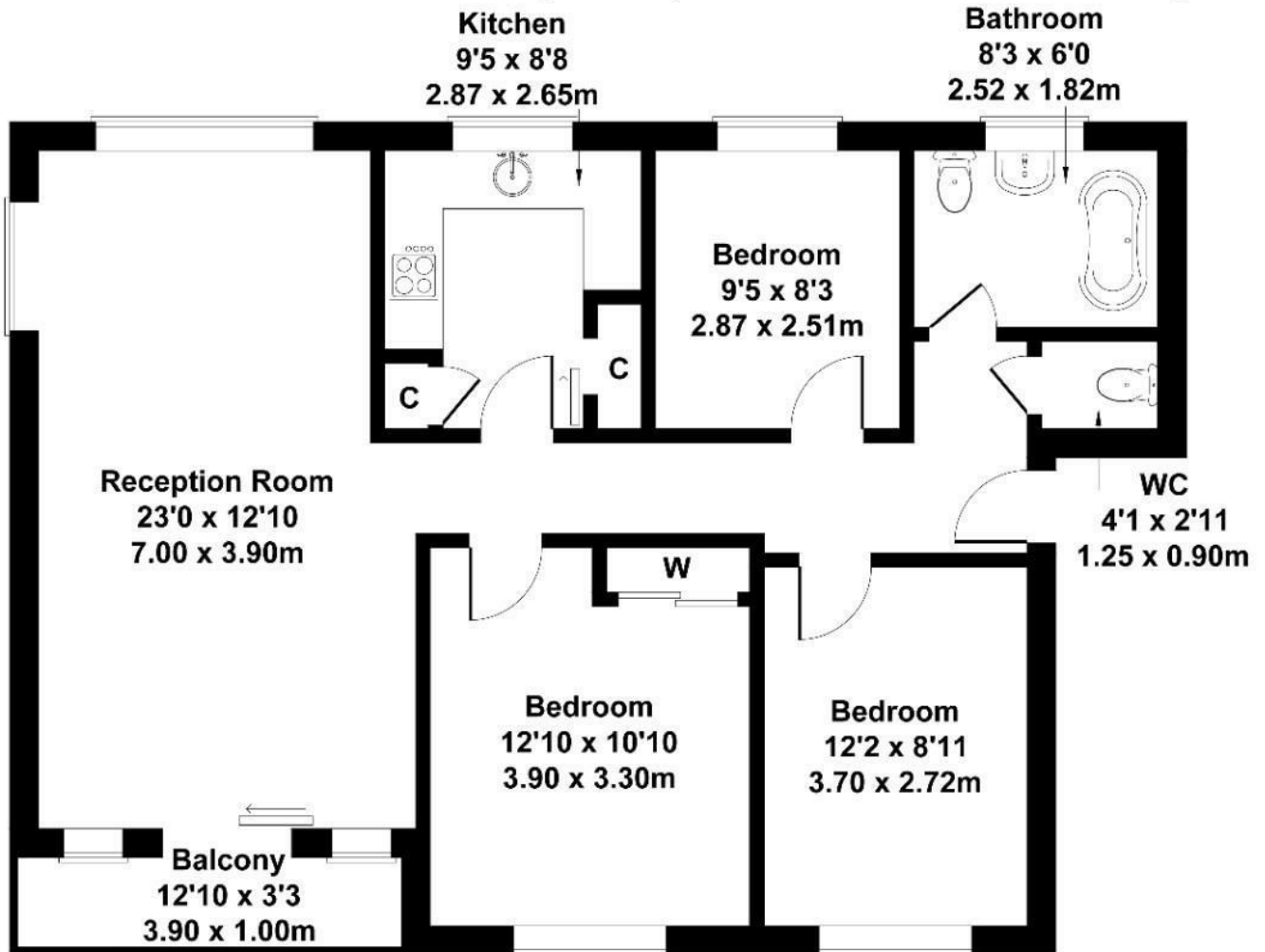
- Top floor flat
- Close to 900 Sq ft
- Three bedrooms
- Balcony
- Newly refurbished
- No chain
- Garage
- Situated directly opposite Ealing Common Park
- Close to Ealing Broadway
- Transport links and good school very close by

£500,000

Gunnersbury Manor

Approximate Gross Internal Area

883 sq ft - 82 sq m



THIRD FLOOR

Not to Scale. Produced by The Plan Portal 2025
For Illustrative Purposes Only.

Energy Efficiency Rating		
	Current	Potential
Very energy efficient - lower running costs		
(92 plus) A		
(81-91) B		
(69-80) C	71	74
(55-68) D		
(39-54) E		
(21-38) F		
(1-20) G		
Not energy efficient - higher running costs		
England & Wales	EU Directive 2002/91/EC	